



FULL PRODUCT LINE
COMMITMENT **VALUE** INNOVATION™

DUAL DISC • ELASTOMER LINED • NOZZLE CHECK • SINGLE DISC • LUG BODY • NOZZLE CHECK WAFER



GLOBE • THREADED • SHORT PATTERN API6D • SINGLE DISC EXTERNAL WEIGHT & SPRING • FOOT VALVE





CHAMPION VALVES INC

OUR MISSION

Our mission is to be the brand of choice for meeting the market's needs for competitively priced, high-quality check valves with prompt, on-time delivery and exceptional customer service.

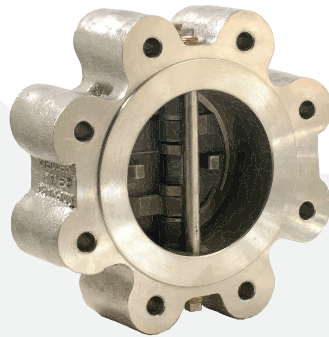


MODEL CV™

**Wafer Style
Dual Disc Check Valve**

Size Range
2" - 72"

ASME Class
150 - 2500



MODEL CV-LUG STYLE™

**Lug Style
Dual Disc Check Valve**

Size Range
2" - 72"

ASME Class
150 - 2500



MODEL CVL™

**Elastomer Lined
Dual Disc Check Valve**

Size Range
2" - 24"

ASME Class
150

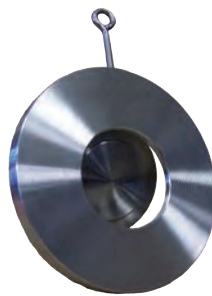


MODEL SD™

**Wafer Style
Single Disc Check Valve**

Size Range
2" - 24"

ASME Class
150 - 600



MODEL SDS™

**Short Pattern API 6D
Single Disc Check Valve**

Size Range
2" - 24"

ASME Class
150 - 600



MODEL SDX™

**External Weight & Spring
Single Disc Check Valve**

Size Range
2" - 24"

ASME Class
150 - 600



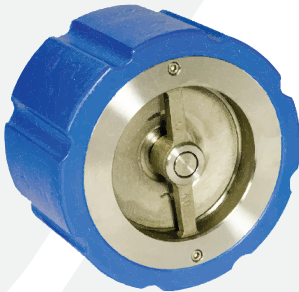
CHAMPION VALVES INC

Champion Valves, Inc.™ is dedicated to the goal of total quality management to provide industry-best products and services to our customers.

The CVI® management system has been certified to ISO 9001 standards. CVI® also offers CRNs in all Canadian provinces on many of our product models.



www.wafercheck.com



MODEL SCW™

**Wafer Style
Silent Check Valve**

Size Range
2" - 12"

ASME Class
150 - 2500



MODEL SCG™

**Globe Style
Silent Check Valve**

Size Range
2" - 24"

ASME Class
125 - 300



MODEL SCT™

**Threaded Style
Silent Check Valve**

Size Range
1/2" - 2"

WOG
740 PSI



MODEL NZW™

**Axial Flow Wafer
Nozzle Check Valve**

Size Range
2" - 12"

ASME Class
150 - 2500



MODEL NZ™ / NZS™

**Axial Flow API 6D & Short Pattern
Nozzle Check Valve**

Size Range
1/2" - 54"

ASME Class
150 - 2500



MODEL FV™

**Foot Valve
with Inlet Screen**

Size Range
1/2" - 54"

ASME Class
150 - 2500



CHAMPION VALVES INC

P.O. BOX 12901 WILMINGTON NC 28405 USA
PHONE: 910.794.5547 FAX: 910.794.5581 EMAIL: SALES@WAFERCHECK.COM
WWW.WAFERCHECK.COM

DUAL DISC • SINGLE DISC • NOZZLE CHECK • SILENT CHECK

COMMITMENT VALUE INNOVATION™

